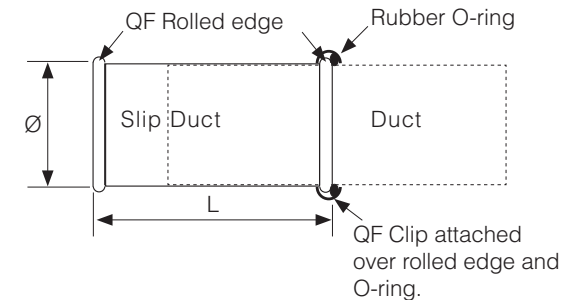
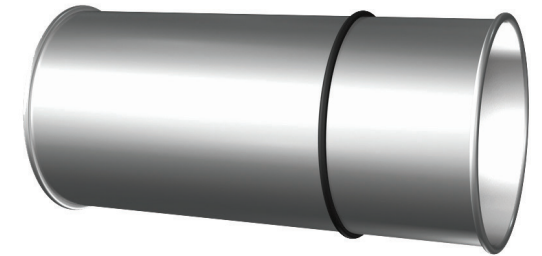


QF Slip Duct

Ø mm	O/D mm	I/D mm	Rolled Edge (nom. mm.)	Length (nom. mm)	Weight kg	Galvanised Steel
80	81	80	6	300	0.5	0.7
100	101	100	6			
125	127	126	6			
140	142	141	6			
150	151	150	6			
160	162	161	6			
180	182	181	8			
200	204	203	8			
224	228	227	8			
250	253	252	8			
280	283	281	8			
315	317	316	10			
350	352	351	10			
400	402	400	10			
450	452	450	10			
500	502	500	10			
560	562	560	10			
630	632	630	10			
710	712	710	10			



Construction
Longitudinal seam type: groove (lockform) seam.

Ends
QF (Quick-Fit rolled edge).

Temperature Rating of Product Components		
° C	Slip Duct	Sealants
200°	Galvanised Steel	
121°		3M Metal Sealant 2084
-20°		

Additional Notes

At temperatures ranging between 200° C and 250° C, the zinc-iron alloy layers in galvanised steel will continue to provide a high level of protection from corrosion. However, there may be some peeling, changes in mechanical properties, and reduction in the corrosion protection. Recommended max. service temperature is 200° C.

Compliance / Rating of Product Components		
Product	Material	Compliance / Rating
Slip Duct	Galvanised	JIS G 3302 with G90 Rating
3M Metal Sealant 2084	Acetone blend	AAMA Specification 801.1