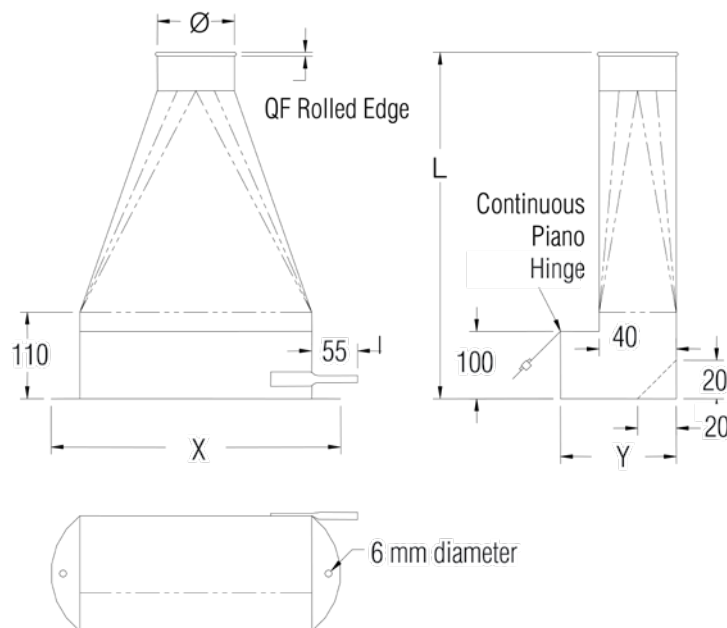


TECHNICAL DATA SHEET: FLOOR SWEEP (QF / FB)

Ø mm	Flat Edge mm	X mm	Length mm	Y mm	Weight kg	Galvanised Steel Thickness mm
080	6*	305	408	155	0,6	0,7
100	6*	305	408	155	1,0	0,7
125	6*	305	408	155	2,0	0,7
140	6*	305	408	155	2,9	0,7
150	6*	305	408	155	3,4	0,7
160	6*	305	408	155	3,8	0,7
180	6**	305	408	155	4,9	0,7
200	6**	305	408	155	5,9	0,7
224	6**	305	408	155	6,9	0,7
250	6**	305	408	155	8,3	0,7
300	6***	305	408	155	10,7	0,7

*QF has an added O-ring, rolled edge = 6 mm.
 **QF has an added O-ring, rolled edge = 8 mm.
 ***QF has an added O-ring, rolled edge = 10 mm.



Construction:

Body: Lapped, spot welded and caulked.

Collars: Have a laser welded longitudinal seam. Collars are attached to the body using a raised hemmed, spot welded seamed construction and are caulked.

Ends: Standard is 6 mm turned out edge (FB). For QF, one O-ring will be supplied for rolled edge.

Additional Notes

At temperatures ranging between 200° C and 250° C, the zinc-iron alloy layers in galvanised steel will continue to provide a high level of protection from corrosion. However, there may be some peeling, changes in mechanical properties, and reduction in the corrosion protection. Recommended max. service temperature is +80° C.

Not available in UK.

Compliance / Rating of Product Components

Product	Material	Compliance / Rating
Floor Sweep	Galvanised	DX51D with Z275 Coating
Joka Seal Metal Sealant 2315	Aceton Blend	AAMA Specification 801.1

Temperature Rating of Product Components

	Floor Sweep	Sealant
200°C	Galvanised Steel	Joka Seal Metal Sealant 2315
121°C		
-20°C		

